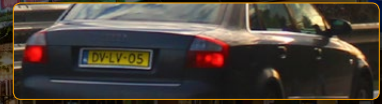


MICROCAM

IP CAMERA DESIGNED FOR ON-THE-MOVE LICENSE PLATE RECOGNITION

ANPR RESULTS:

DV-LV-05



- NUMBER PLATE: DV-LV-05
- NATIONALITY: EU-NEDERLAND
- RECOGNITION DATE: 2018-07-01 23:19:19+00:00
- BLACKLIST: NO



MOBILE ANPR/LPR CAMERA

MicroCAM performs on-the-move license plate recognition – in the same quality as a fixed high-end ANPR camera. MicroCAM doesn't want you to make a compromise: it offers the best of both worlds. The on-board image-based Vehicle Detection algorithm creates an event for each passing vehicle. Up to now, something almost impossible by an ANPR camera that catches plates while you are driving.

MicroCAM's compact design was created with portability in mind. The camera can be easily mounted on a rooftop of a patrol car or placed behind the front or rear window. The camera uses a single POE+ connector, which makes the installation quick and straightforward. Pick the wide-angle lens or the long-range lens – according to your preferred use. MicroCAM M402 runs the world's No.1 plate recognition engine: Carmen® ANPR.



MAIN BENEFITS

- Operates ANPR technology from a moving vehicle
- Runs proven, field-tested, unrivalled Carmen® ANPR engine
- Processing speed/volume optimized by Vehicle Detection
- Durable weather-proof housing
- Easy mounting on patrol cars with single cable connection
- Results saved or transferred to a predefined database

TOWARD THE FUTURE IN SAFETY – SINCE 1991

SPECIFICATIONS

ARH M402

- On-the-move ANPR • Rooftop/dashboard camera • Vehicle Detection • single cable (PoE+) connection • Quick auto brightness
- CARMEN® ready • ONVIF compliant

Production Code	M202 HD	M202 HD WIDE	M402 HD	M402 HD WIDE
	MicroCAM-01-3330	MicroCAM-01-3310	MicroCAM-01-3430 (IR850) MicroCAM-01-3438 (IR760)	MicroCAM-01-3410 (IR850) MicroCAM-01-3418 (IR760)

DISTANCE RANGE

	M202 HD	M202 HD WIDE	M402 HD	M402 HD WIDE
Optimal ANPR range at ambient light	6.5 m – 14 m (21 feet – 45 feet)	1 m – 3.5 m (3.3 feet – 11.5 feet)	6.5 m – 14 m (21 feet – 45 feet)	1 m – 3.5 m (3.3 feet – 11.5 feet)
Maximal ANPR range at optimal conditions	17 m (54 feet)	4 m (13 feet)	17 m (54 feet)	4 m (13 feet)

IMAGING

Resolution (H x V pixels): frame rate	1280 x 720: 30 fps			
Day mode / Night mode	Light sensor configurable quick auto-switching day/night mode, automatic brightness control			
Lens	Fixed 16 mm	Fixed 4.1 mm	Fixed 16 mm	Fixed 4.1 mm

ILLUMINATION

Wavelength	850 nm (infrared)	760 nm or 850 nm (infrared)
Illumination modes	Synchronized flash	

PROCESSING & I/O

CPU for ANPR	–	ARM Quad Core 4x1 GHz
Communication protocols	ARP, ICMP, TCP/IP, DHCP, NTP, FTP, HTTP, SMTP, RTP	

ELECTRICAL DATA

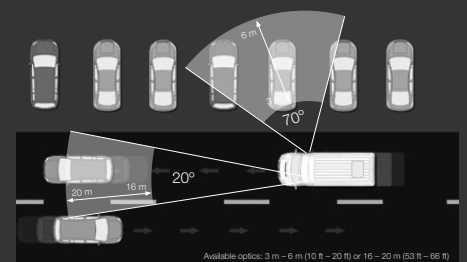
Power requirement	PoE+ (IEE 802.3at)	
Power consumption (typical)	8 W	12 W
Connectivity	Single cable PoE connector	

ON-BOARD INTELLIGENCE

CARMEN® ANPR	–	Included
Video Analytics (Motion Detection, Private Zones)	Included	
Trigger sources	Video Analytics / Software trigger (controlled via HTTP or HTTPs request)	

MECHANICAL DATA

Operating temperature	-30 °C – 55 °C (-22 °F – 130 °F)
IP rating	IP67
Dimensions (without bracket) l x w x h	183 mm x 160 mm x 96 mm (7.2" x 6.3" x 3.8")
Weight (without bracket)	1.6 kg (3.52 lbs.)
In the box	Camera with 5 m cable, bracket, shield.



OPTIONAL ACCESSORIES

I/O cables



Technical specifications are subject to change without prior notice. This document does not constitute an offer.

ADDRESS: ALKOTAS UTCA 41, H-1123 BUDAPEST, HUNGARY, EU
 PHONE: +36 1 201 9650 • FAX: +36 1 201 9651 • EMAIL: SENDINFO@ARH.HU
 WWW.ARH.HU